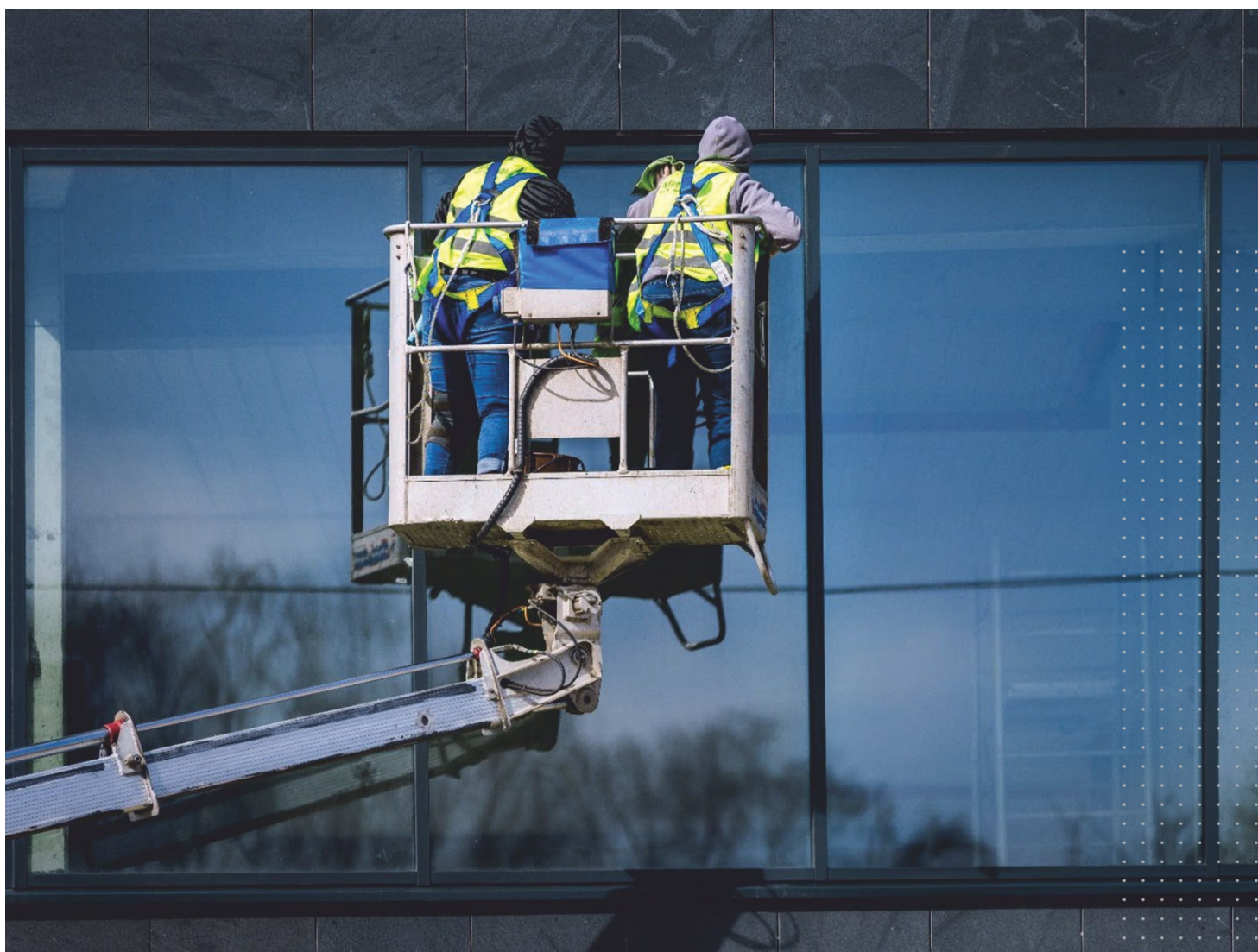


OPERATION AND MAINTENANCE

A guide to proper product care



CLEANING

To ensure a long service life and proper functionality, regular cleaning and maintenance is necessary. It is recommended to perform annual maintenance on windows and doors, or at least twice a year in harsh environments or in the case of extensive use in public buildings.

The best cleaning method for the product will depend on the material (timber, timber alu clad or aluminum) and finish type.

GENERAL RECOMMENDATIONS

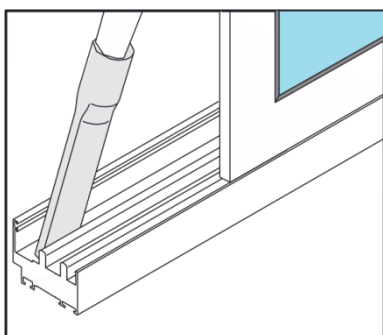
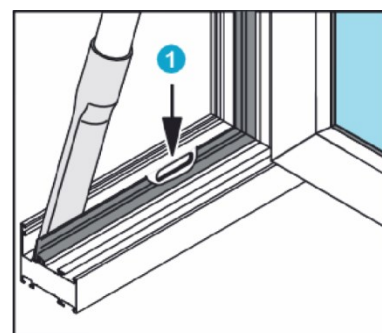
For best product care, clean the frames and gaskets every time the glasses are cleaned. Use water and a soft sponge, or add a neutral cleaning agent (pH 7) if necessary.

Do not use alkaline agents for cleaning aluminum profiles or glasses. Avoid using cleaning products with abrasive surfaces.



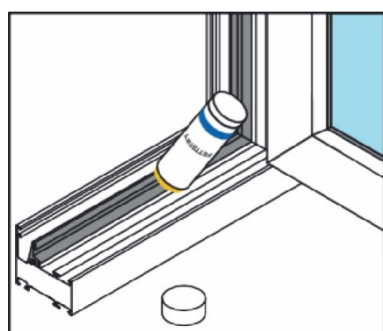
CLEANING THE DRAINAGE SLOTS

Dust and debris that accumulate in the gap between the gaskets and the outer frame can be removed with a vacuum cleaner. To clear any obstructions in the drainage slots ①, use a thin wooden stick or cotton bud.



CLEANING THE ROLLER GUIDES ON SLIDING AND FOLDING DOORS

Use a vacuum cleaner to remove dust and dirt from the roller guides in the threshold. Clean the roller guides with water and a soft sponge.



LUBRICATING THE GASKETS

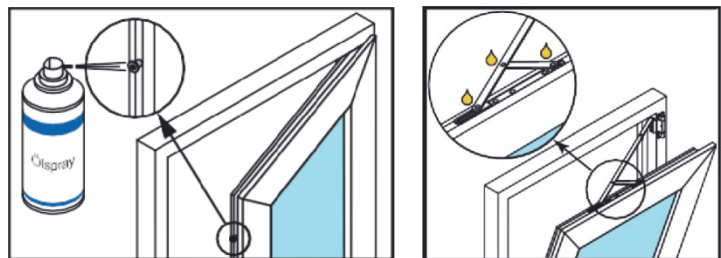
Regular lubrication of the gaskets will help to retain their flexibility and prevent them from sticking. Use a grease stick or Vaseline to lubricate the gaskets. During this process, inspect all the gaskets for any signs of damage.

MAINTENANCE

Regular inspection and adjustment of the products are essential to ensure optimal performance and longevity. Keep movable parts in the fittings and sliders lightly lubricated to prevent them from becoming sluggish or getting stuck. Ensure that the aluminum guide rails are clean and coated with a small amount of lubrication. Check that the fasteners for the fittings are properly tightened and correctly positioned. For facades, windows, doors, and glass roofs, inspect that drainage holes are not blocked, that the glazing and rubber seals fit tightly in the corners, that the opening elements are properly aligned, and that cover caps are securely in place. Timber products require additional annual surface care. Regularly inspect the wood for any signs of damage, such as cracks or peeling paint. Repair any issues promptly to prevent further damage. Consider applying a timber impregnation treatment to enhance the wood's resistance to moisture, fungi, and insects.

MAINTENANCE OF FITTINGS COMPONENTS

All moving parts in your units are designed to be low-maintenance, but by applying a small amount of non-corrosive oil you can ensure their smooth operation over time.

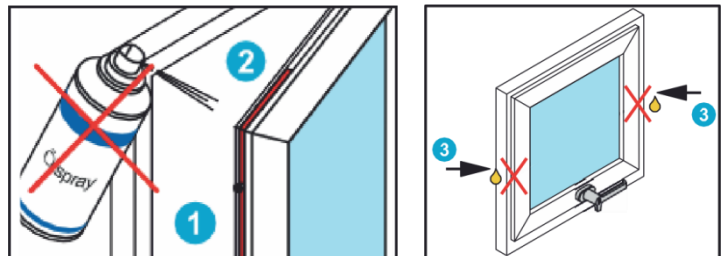


A modest amount of lubricant suffices at these points. After applying it, clean away any surplus to prevent dirt buildup.

The components ① and ② are lubricated during the production process and maintenance is unnecessary.

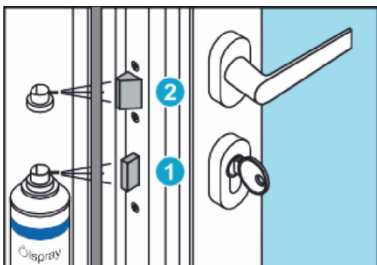
Vertical pivot windows are equipped with brakes to secure the unit in open position.

Avoid applying oil or grease to the pivots ③.



MAINTENANCE OF DOORS

The bolt ① and the latch ② of door locks must be lubricated with oil suitable for locks or graphite powder.



Prior to lubrication:

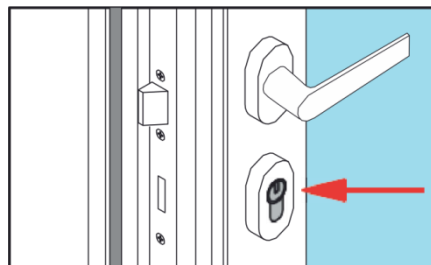
Lock the door to expose the bolt.

After lubrication:

Unlock the door to conceal the bolt.

Lubrication of the cylinder:

Only use graphite powder to lubricate the cylinder.

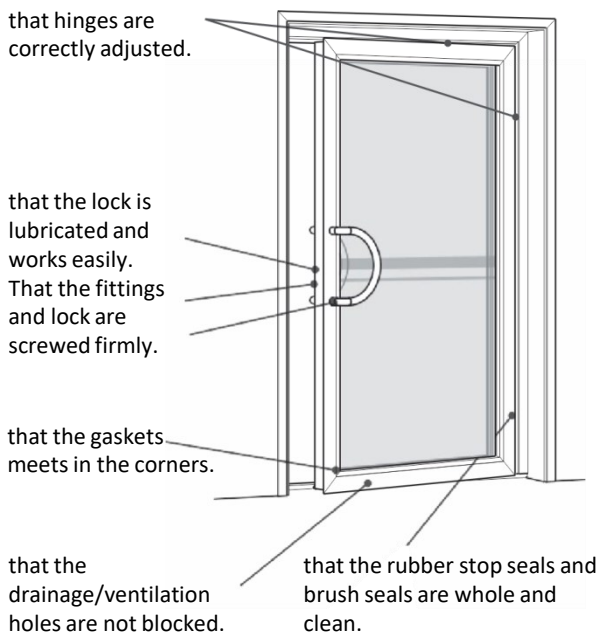


GALVANIC CORROSION

Materials that can induce galvanic corrosion on aluminum profiles should be avoided. When retrofitting sunshades, signs, etc., refrain from using fasteners that may trigger galvanic corrosion.

INSPECTION OF DOORS:

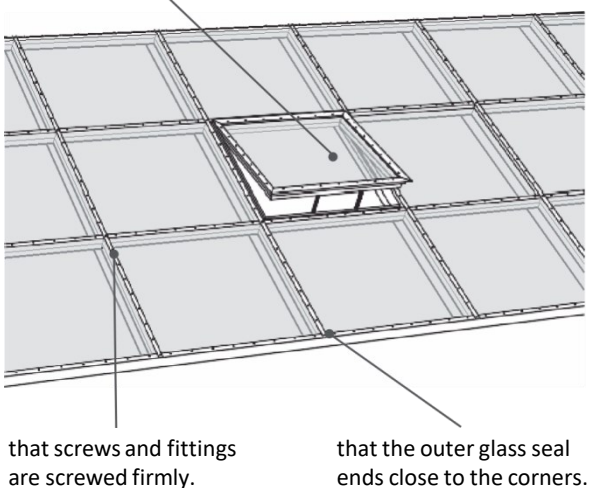
Check the door for smooth operation.



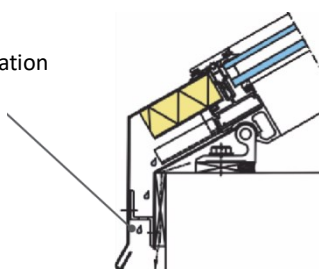
INSPECTION OF GLASS ROOFS:

Please check if the glass ceiling is tight.

Ensure that the opening elements function properly.

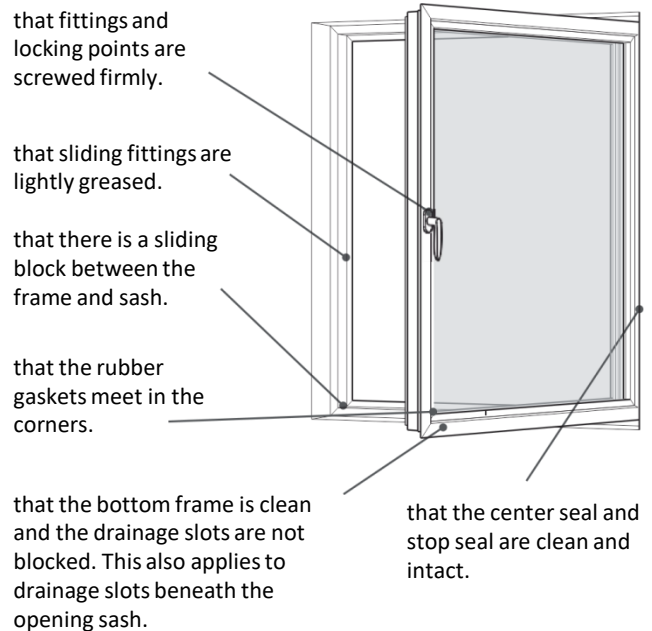


that the drainage/ventilation holes are not blocked.



INSPECTION OF WINDOWS:

Check the window for smooth operation.

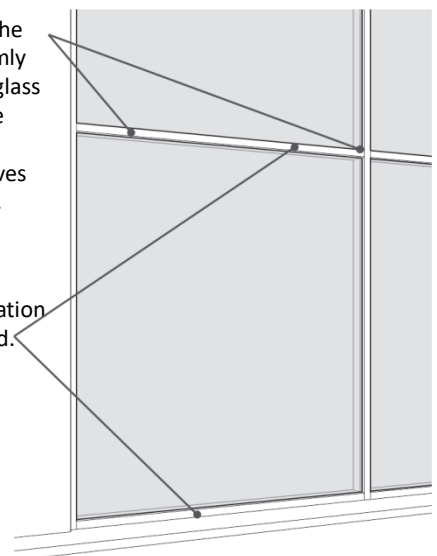


INSPECTION OF FACADES:

Check that the facade is secure and free from any damage.

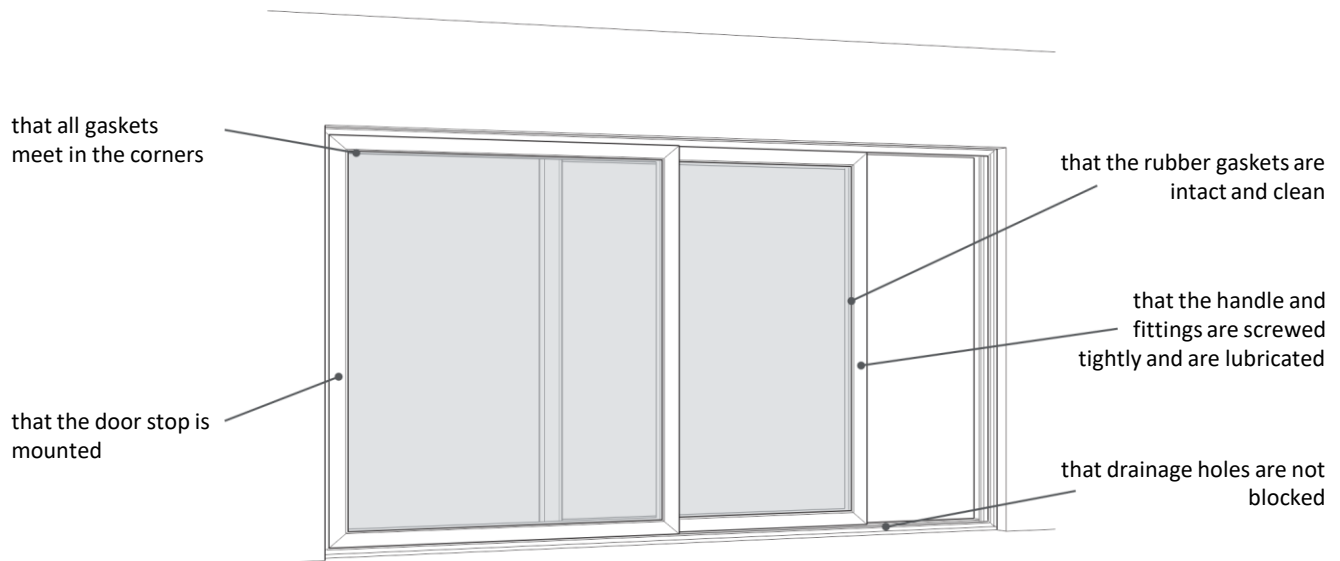
that the gaskets on the pressure lists are firmly pressed against the glass surfaces and that the cover caps are fixed properly in the grooves on the pressure lists.

that drainage/ventilation holes are not blocked.



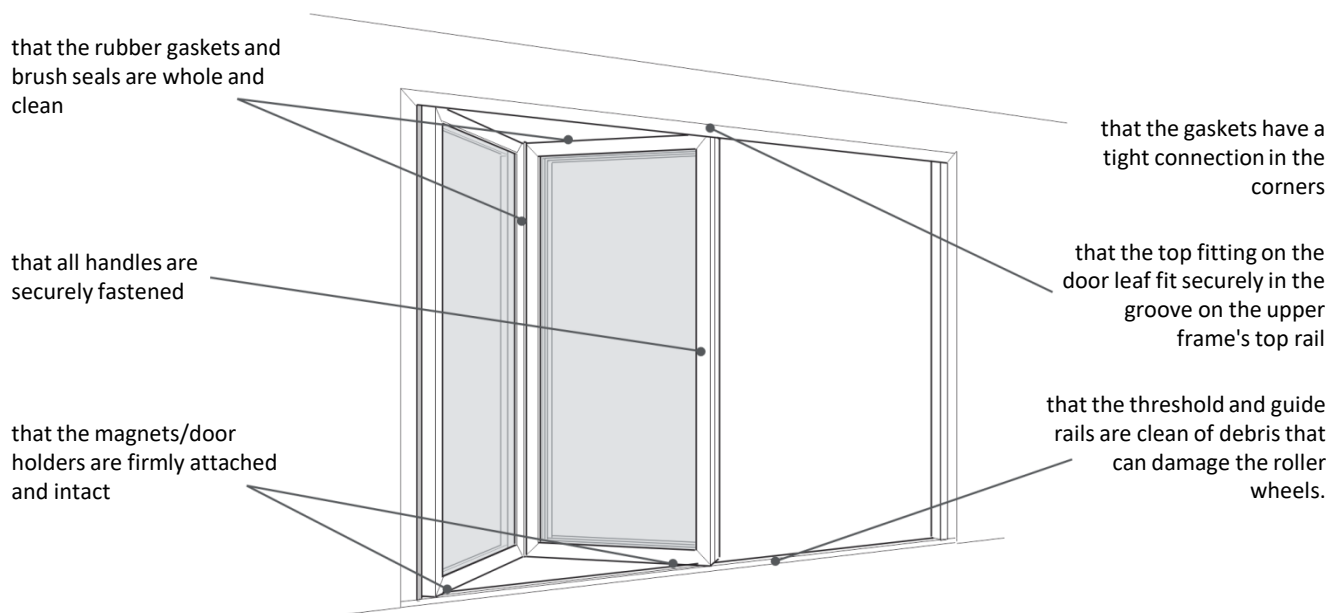
INSPECTION OF SLIDING DOORS:

Check the sliding door for smooth operation.



INSPECTION OF BI-FOLDING DOORS:

Check the bi-folding door for smooth operation.



Maintenance Log

Product(s): _____

Project name: _____

Failure to comply with the maintenance recommendations provided in this manual can release the manufacturer from warranty claims. Please use the maintenance log table below to keep track of required maintenance activities.

Maintenance activities	Year 1	Year 2	Year 3	Year 4	Year 5
Test components for smooth operation.					
Clean frames and gaskets, and check gaskets for damage.					
Lubricate gaskets.					
Ensure that all hardware fittings are properly fixed.					
Lubricate locking pins and other movable hardware (tilt stay on windows, lock case on doors, etc.)					
Inspect that drainage holes are not blocked.					
Inspect that rubber gaskets fit tightly in the corners.					
Ensure that cover caps are securely in place on facades.					
	Date:	Date:	Date:	Date:	Date:
	Signature:	Signature:	Signature:	Signature:	Signature:

